

Georgia DNR Shellfish Program

SHELLFISH

A Georgia fishing license is required to collect Oysters and Clams for recreational purposes. Shellfish must be harvested between the hours of 1/2 hour before official sunrise and 1/2 hour beyond official sunset. Shellfish may only be collected with handheld implements. Recreationally harvested shellfish may NOT be sold.

Prior to harvest in the approved areas, check with the Georgia DNR Shellfish Sanitation Program for annual season closures and for areas that have been posted as prohibited due to restoration efforts

SHELLFISH LIMITS

Oysters must measure no less than 3 inches from hinge to mouth, unless the oyster cannot be removed from a legal sized oyster without destroying it. For clams, the maximum depth from one shell half to the other must be at least 3/4 of an inch thick.

Recreational quantity limits are up to 2 bushels of oysters and 1 bushel of clams per person per day, with a maximum limit of 6 bushels of oysters and 1 bushel of clams per boat per day.

HARVEST AREA MONITORING

DNR tests shellfish harvest waters monthly for harmful bacteria. When bacterial contamination is found, DNR will close the area until the contamination subsides.

For current harvest area status information, call the Shellfish Sanitation Program at 912.264.7218



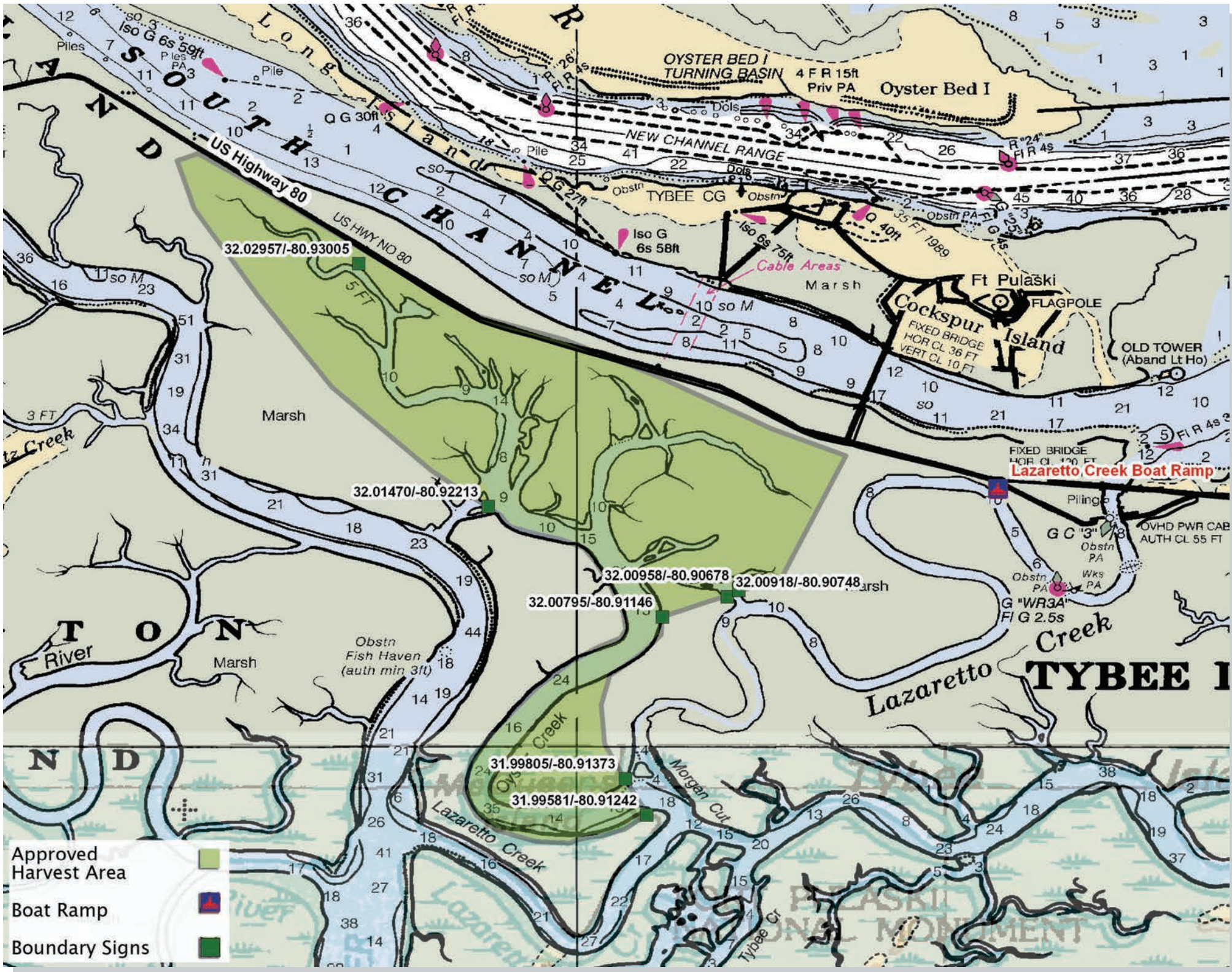
For more maps and information concerning our program, please visit

CoastalGaDNR.org



Shellfish Recreational Harvest Area Chatham County





32.029571/-80.93005

32.01470/-80.92213

32.00958/-80.90678

32.00918/-80.90748

32.00795/-80.91146

31.99805/-80.91373

31.99581/-80.91242

- Approved Harvest Area
- Boat Ramp
- Boundary Signs



OYSTER BED I
TURNING BASIN

Oyster Bed I

Cockspur Island
FIXED BRIDGE
HOR CL 36 FT
VERT CL 10 FT

Lazaretto Creek Boat Ramp

TYBEE I

Cable Areas

FIXED BRIDGE
HOR CL 120 FT

OVHD PWR CAB
AUTH CL 55 FT

OLD TOWER
(Aband Lt Ho)

Obstn PA

Obstn PA

Obstn PA

G "WR34"
FI G 2.5s

Obstn PA

Obstn PA

Obstn PA

Obstn PA

Obstn PA

Obstn PA

Obstn PA

Obstn PA

Obstn PA

Obstn PA

Obstn PA

Obstn PA

Obstn PA