

# Hard Labor Creek State Park



## LEGEND

### LAKE RUTLEDGE EQUESTRIAN TRAIL LEGEND:

- Blue Trail - 16 miles
- Red Loop - 4.4 miles
- Yellow Loop - 7.2 miles
- Orange Loop - 8.8 miles
- 1 - 15 Mile Markers

### LAKE BRANTLEY EQUESTRIAN TRAIL LEGEND:

- Green Trail - 8 miles
- Gray Loop - 4.4 miles (between posts 3 & 6)
- 1 - 7 Trail Mile Markers

### SYMBOLS:

- |                       |                 |
|-----------------------|-----------------|
| Trading Post          | Campground      |
| The Creek Golf Course | Group Shelter   |
| Equestrian Area       | Picnic Area     |
| Mountain Biking Area  | Picnic Shelter  |
| Restroom              | Pioneer Camping |
| Cottage               | Beach           |
|                       | Boat Ramp       |

### MOUNTAIN BIKING AREA:

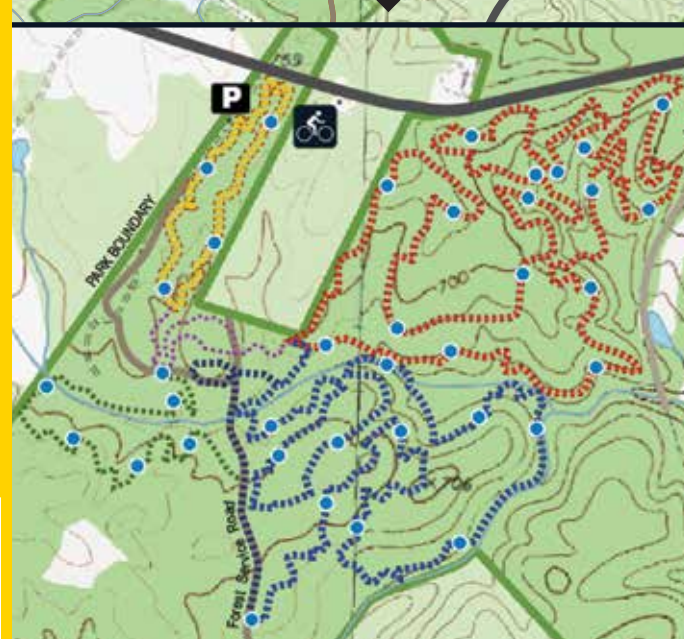
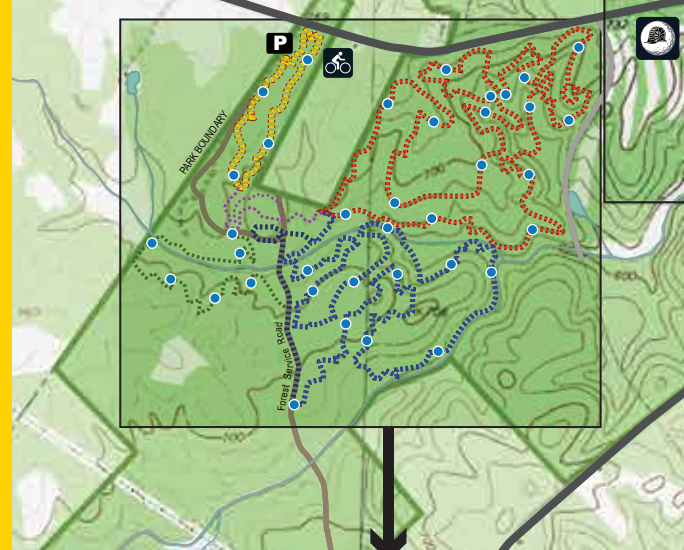
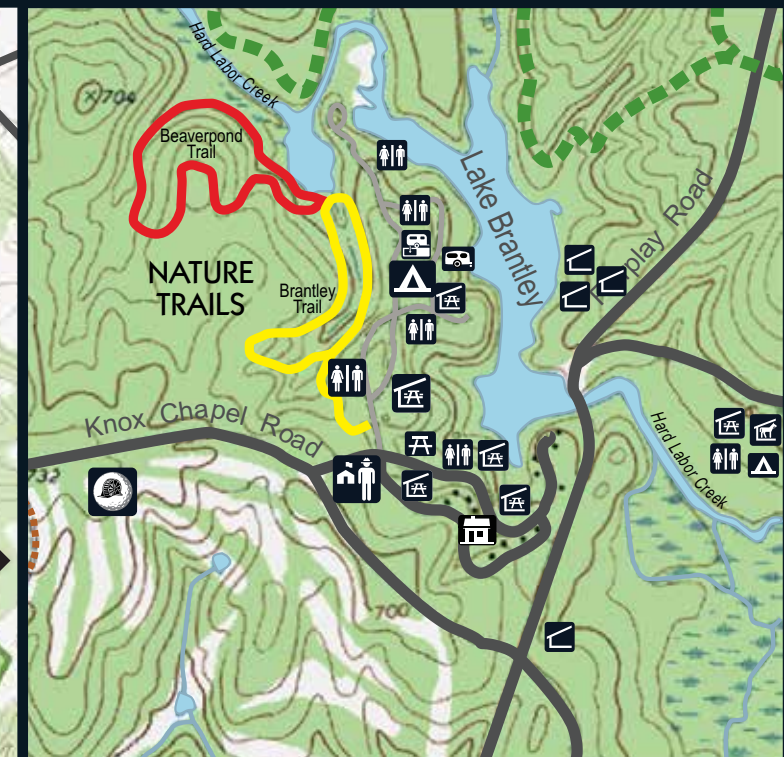
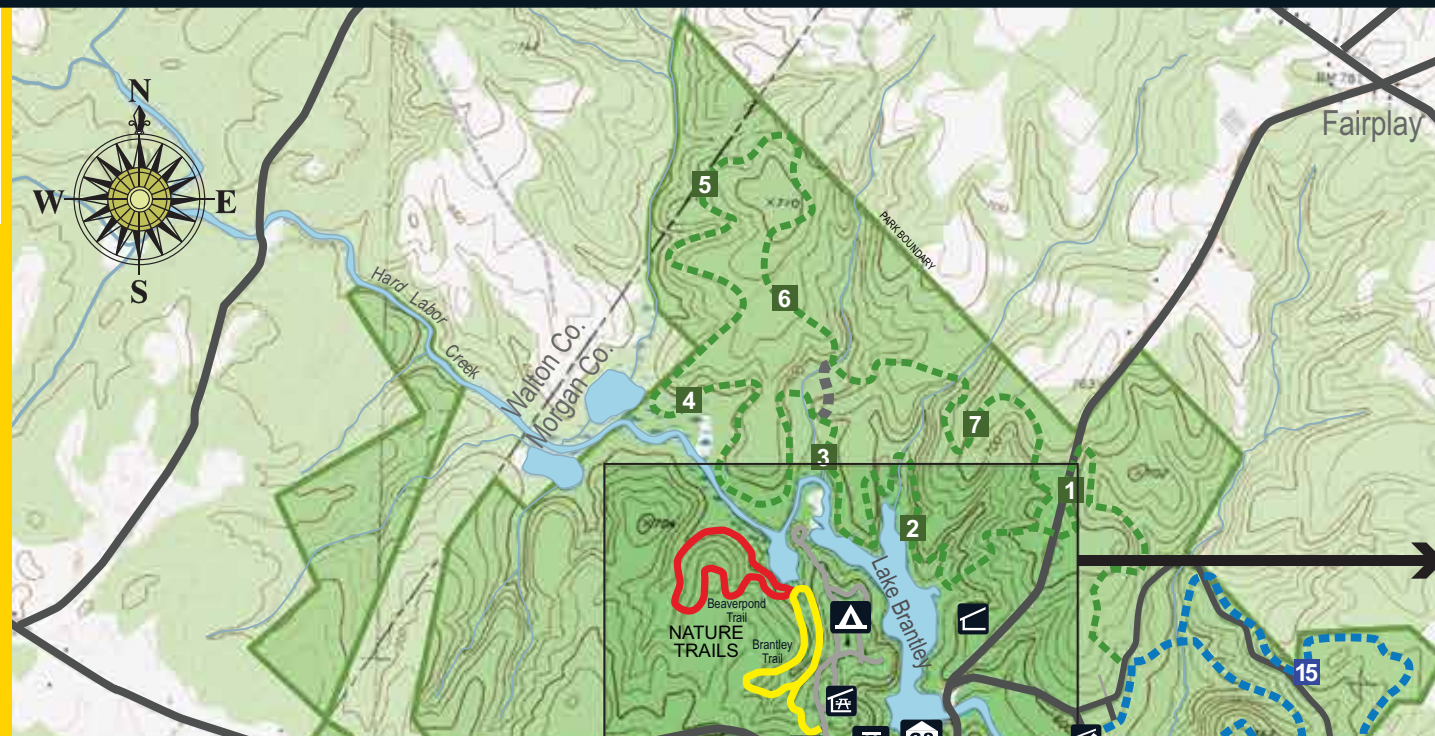
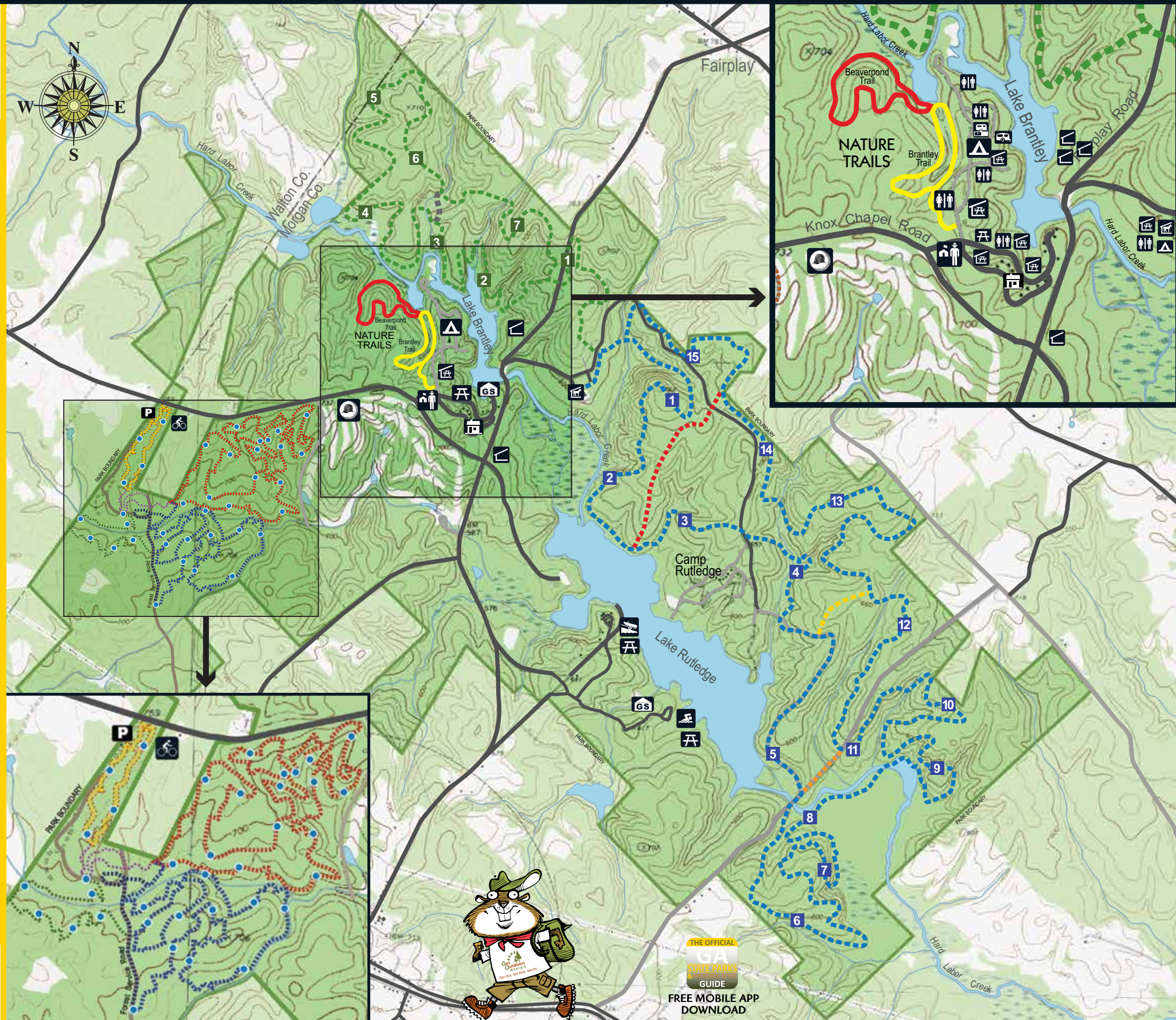
- Orange Loop - 1 mile
- Red Loop - 5.25 miles
- Blue Loop - 4.5 miles
- Green Loop - 1.5 miles
- Trail Markers

### NATURE TRAIL:

- Brantley Nature Trail - 1 mile
- Beaverpond Nature Trail - 1 mile

### OTHER:

- Paved Road
- Unpaved Road
- Creek



# Hard Labor Creek State Park



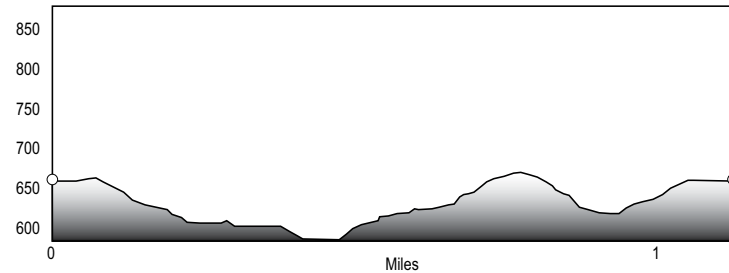
Hard Labor Creek State Park, located in Morgan and Walton counties, is one of the largest state parks in Georgia. The park's unusual name is derived from a bold stream that cuts an easterly course through the park and joins the Apalachee River 25 miles away. The park came into being during the Great Depression when the National Park Service acquired 44 parcels of land, joining them to form the 5,804-acre Hard Labor Creek Recreational Demonstration Area. The site's purpose was to demonstrate the reclamation of marginal farmland for recreation. The task of land stabilization, along with early facility construction, was completed by the Civilian Conservation Corps and the Work Progress Administration. Beginning in 1934, these industrious workers planted thousands of trees, built dikes and terraces, constructed roads and cleared lakebeds. In 1946, the Recreation Demonstration Area was given to the State of Georgia and became known as Hard Labor Creek State Park.

## Rules for Stable Use and Equestrian Trails:

- Present a negative equine infectious anemia test for each horse.
- Ride only during daylight, between dawn and sunset.
- Do not ride on roadways or any other area that is not clearly identified for equestrians.
- Do not ride in a fast or reckless manner.
- Attend horses at all times.
- Ride no more than 2 abreast on trails.
- Do not graze horses.
- Camp only in the designated campground.
- Do not ride horses into the campground.
- Do not picnic in the campground.
- Do not stable horses using a tie-line or temporary corral.
- Do not put more than one horse in each stall.
- Dogs must be leashed and attended at all times.
- Only registered overnight park visitors may stable horses.
- Return stall key(s) to the park office by 1 p.m. on the day of departure.
- Remove soiled bedding from stall(s) prior to departing.
- Do not consume alcoholic beverages in day-use areas.
- No smoking in the stable area.



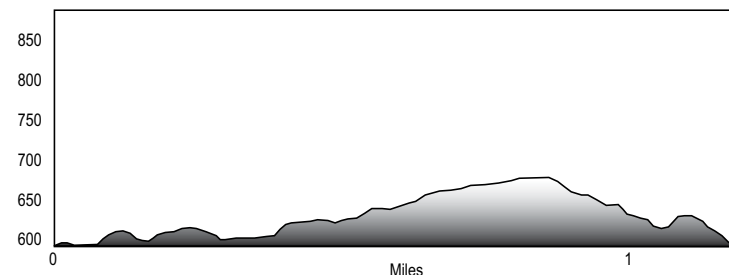
## BRANTLEY NATURE TRAIL



Brantley Trail - 1 mile, Compacted Soil Surface, EASY TO MODERATE

An easy walk characterized by mature hardwoods, this trail has reminders of the park's origin. A prominent ravine echoes the past and the result of poor land-use practices. Much of the land which comprises Hard Labor Creek State Park was eroded cotton and corn fields and only marginally productive. Originally known as Hard Labor Creek National Recreation Demonstration Area, land stabilization was one of the first projects accomplished in the 1930s by the Civilian Conservation Corps.

## BEAVERPOND NATURE TRAIL



Beaverpond Trail - 1 mile, Compacted Soil Surface, EASY TO MODERATE

Be sure you do not miss the tulip poplar (*Liriodendron tulipifera* L) found on the left not long on your hike. Using care, step to its base and gain a greater appreciation of its size. Another feature of importance are the wetlands. These cradles of life contain the required food, shelter, and water for organisms across the entire food chain.

## MOUNTAIN BIKE TRAIL AREA

There are 12.25 miles of mountain trails appropriate for the beginner to advanced experience level mountain biking. The **Orange Loop** is about 1-mile on level ground which takes the rider through an interesting area of regenerating pine forest. The **Red Loop** is a more challenging 5.25-mile loop that will take the rider up and down gently sloping terrain, and crosses older hardwood forest of mixed pine and hardwood stands. Along the way are lush fern covered stream bottoms, boulder formations, and cascading streams. This trail is rated more for the Intermediate/Advanced riders. The **Blue Loop** is a 4.5-mile loop rated for Beginner/Intermediate riders and highlights four creekside excursions. Phase I of the **Green Trail** is open with 1.5 miles of Beginner rated single track. Riders may also enjoy seeing wildlife like deer, turkey, wild pigs and fox squirrels as they enjoy a day of biking.



## EQUESTRIAN AREA

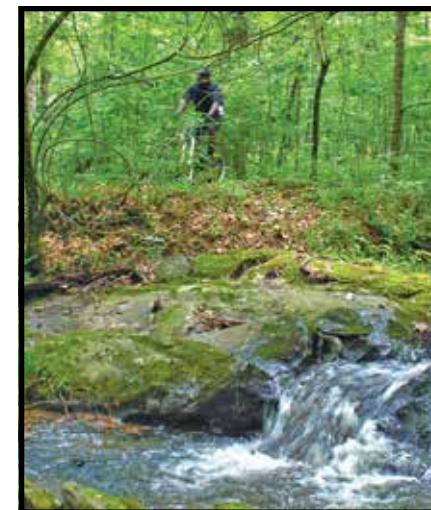
The equestrian area features trails of various lengths up to 24 miles. A gated entrance allows secured access. In addition to the trails this area includes paved parking, campsites with water and electricity, a bathroom with hot showers, and a large riding ring. A negative equine infectious anemia test must be presented prior to riding any state park trail.

## LAKE RUTLEDGE EQUESTRIAN TRAIL

This 16-mile trail features both mature hardwood and hardwood/pine forests. Most striking are the bottoms and the creeks that course through them. Often one feels relocated to a more mountainous setting. Short climbs of moderate difficulty are common throughout the trail. Four return loops can be used to measure a ride's length and duration. The section of trail across Fambrough Bridge Road is used less often and offers a ride of quiet solitude. The Lake Rutledge equestrian trail is open to hikers (*see etiquette*).

## LAKE BRANTLEY EQUESTRIAN TRAIL

This 8-mile trail has both pine and hardwood forests. Deep gorges and granite outcroppings are common. A rock quarry used by the Civilian Conservation Corps can be seen if you are especially observant. For a shorter ride take the gray loop and cut the distance in half. Use caution crossing Fairplay Road by dismounting. The Lake Brantley equestrian trail is open to hikers (*see etiquette*).



## SAFETY TIPS

- Tell someone your itinerary and expected return time.
- Take a map, water, snacks, first aid kit, flashlight and whistle. Three short blasts on a whistle are known as a call for help.
- Do not stray from trails. If you become lost, stay in one location and wait for help. This will make it easier for rescuers to find you.
- Don't count on cell phones to work in remote areas, but if they do, be able to give details about your location.
- Invest in good hiking socks such as those found at sporting goods stores. Avoid blisters by carrying "moleskin" and applying it as soon as you feel hot spots on your feet.
- Be prepared for unexpected rain and wind which can lead to hypothermia. Always carry quality rain gear and turn back in bad weather. If you become wet or cold, it is important to get dry and warm as quickly as possible.
- Dress in layers and avoid cotton.

## ETIQUETTE

- Pack out all trash.
- Keep dogs on a leash at all times.
- Do not pick flowers, disturb wildlife or take anything off the park.
- Protect the park and help prevent erosion by staying on the trails.
- Give the right-of-way to equestrians. Do not make loud noises or hurried movements around horses.

## TICKS

These arthropods feed on warm-blooded animals. They do not fly or jump; they come in contact with us or our pets when we walk in tall grass or brush. It is possible to contract diseases such as Rocky Mountain Spotted Fever or Lyme Disease if an infected tick stays attached for a long period of time. Use insect repellent and always check yourself and your pet after each hike. Ticks should be removed with tweezers. Avoid crushing the tick. Nail polish, hot matches, or kerosene will NOT make a tick let go. If you develop a fever or rash within 2 to 3 weeks after a tick bite, see your physician.