

Guide to Fishing the Lower Etowah River



"take me fishing"



The Lower Etowah River runs westward from Lake Allatoona to the confluence with the Oostanaula River at Rome. Powerboats do not easily travel these 48 miles of river. Numerous shoals make this river most navigable by canoe or kayak. Although there is a boat ramp just below Allatoona Dam, another dam just downstream limits boating from this access. There are no other public boat ramps on this stretch of stream. Common fish species in the lower Etowah include: carp, smallmouth buffalo, redbreast sunfish, bluegill, redear sunfish, redeye bass, spotted bass, largemouth bass and freshwater drum. Anglers wishing to consume their catch should pay attention to the fish consumption guidelines as described in the sport fishing regulations or at www.dnr.state.ga.us/dnr/enviro/.

√ Boating Check List

- Each person on board must have a readily accessible U.S. Coast Guard (USCG) approved Type I, II, III, or V (hybrid) Personal Flotation Device (life jacket) in good condition (no rips/tears). Type V (hybrid) devices are acceptable only when worn and securely fastened. Each vessel, except for Class A vessels, canoes, and kayaks must be equipped with at least one type IV (throwable) device. All children under age 10 must wear an appropriately sized USCG approved life jacket while on a moving boat, whether it is by drifting, sailing, or mechanical power.
- Boats with enclosed areas that may trap gas or vapors are required to be equipped with a USCG approved fire extinguisher.
- Carry your fishing license and boat registration with you.
- Check your boat's trailer, navigation lights, and fuel before leaving home.
- Carry a first aid kit, insect repellent, sunscreen, extra clothing, food, and drinking water.
- Be aware of, and abide by all fishing regulations.
- Tell someone where you are going and when you expect to return.

BE AN ETHICAL ANGLER!

Ethical anglers fish responsibly, consider the rights of others, portray a positive image, and help to protect and conserve our natural resources. Be an ethical angler, the future depends on it.

Ethical Anglers:

- # Know and obey the fishing regulations.
- # Keep only the fish they can use and release all others.
- # Pass on the tradition by taking a child fishing.
- # Leave a place cleaner than it was found.
- # Do not transfer fish or plants between bodies of water.
- # Report violations and pollution.
- # Do not litter!
- # Dispose of fishing line properly.
- # Do not trespass.
- # Are courteous of others.
- # Lend a helping hand.

Fishing Tips

Catfish are common in the river with channel catfish being the most abundant and blue catfish next in abundance. A few flathead catfish are also occasionally caught. Catfish up to 10 pounds are commonplace. Anglers fishing for catfish may catch a **lake sturgeon** but they must be released unharmed immediately after being caught. Lake sturgeons are being reintroduced by the DNR into the Coosa River system and cannot be harvested. Sturgeon can be identified by its rounded snout, a toothless mouth on the bottom of its head, four "whiskers" in front of its mouth; bony plates on the side of its body and its shark-like tail. Anglers can help this reintroduction effort by reporting any sturgeon they see by calling the Calhoun Fisheries office at 706-624-1161. More information on this reintroduction project can be found at www.gofishgeorgia.com

Striped bass use the river seasonally as a cool water refuge and the best fishing is from May to September. The remainder of the year, cooler water temperatures allow the fish to disperse downstream into Lake Weiss and very few fish remain in the river.

Bass, bream and crappie inhabit the river year round but fishing is best in the cooler waters of spring and fall. Spotted bass are the most prevalent black bass species, however, there are also fair numbers of redeye and largemouth bass present. Bluegill are the most abundant pan fish but there are also good numbers of redbreast sunfish, green sunfish, and redear sunfish.

Freshwater drum are abundant in the river, although few Georgians pursue them. This species is popular in other parts of the country and is an underutilized fishery in the Etowah. Anglers can best catch drum using live worms, crayfish or small minnows fished on the bottom.

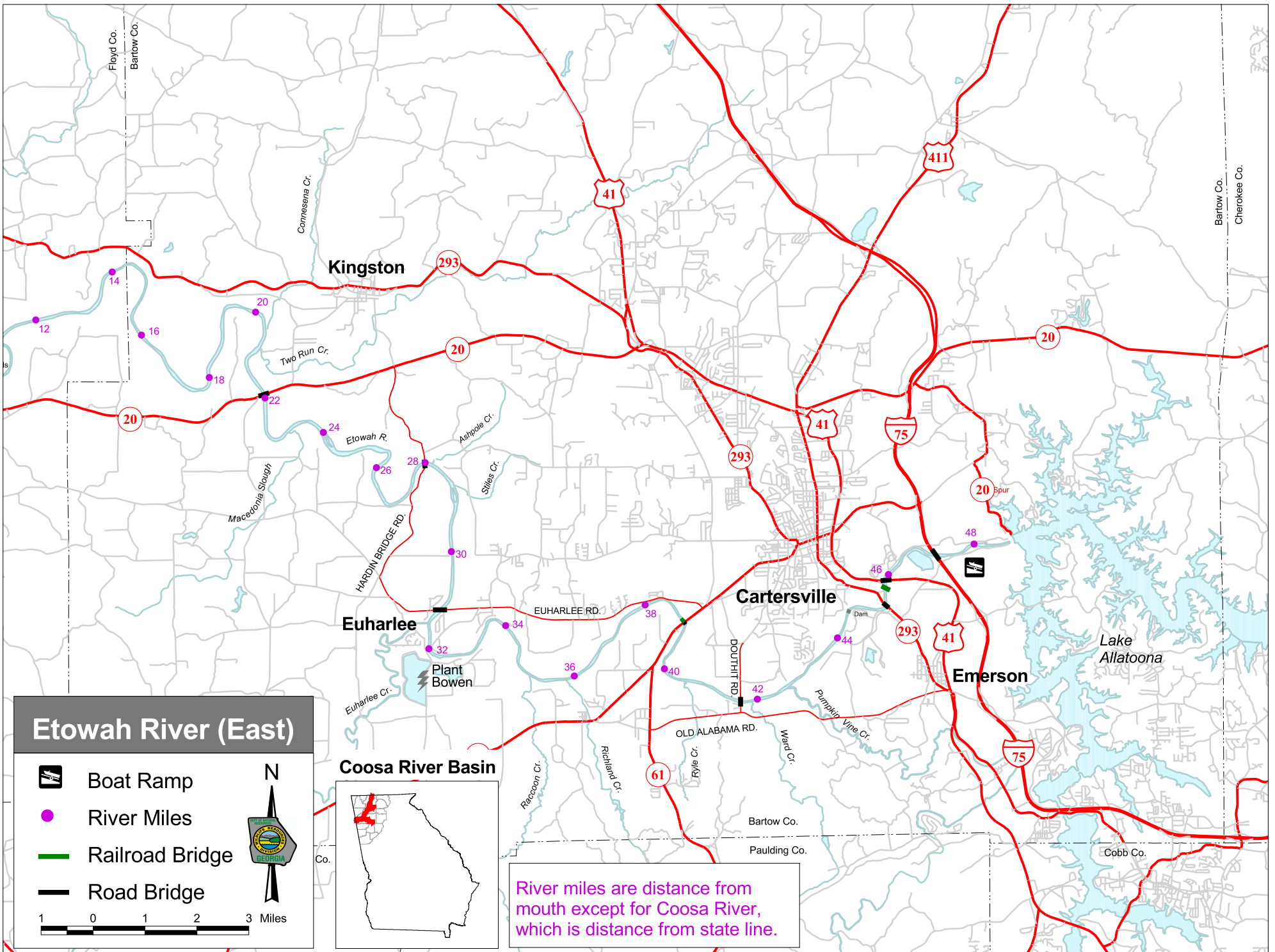
Tips on using the map

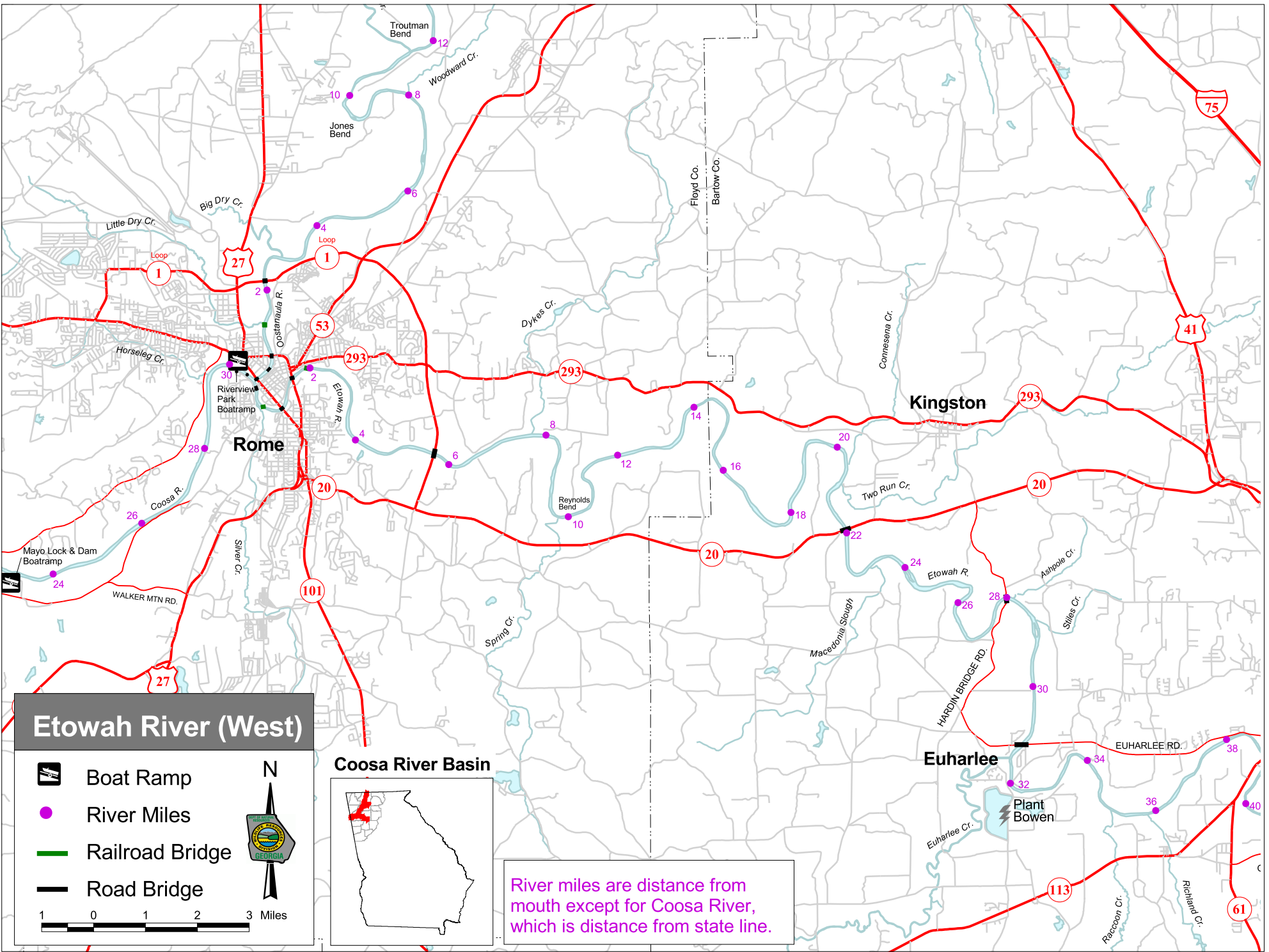
- The map is most useful if viewed in color.
- Maps in this series (Coosa, Oostanaula, Etowah, Coosawattee and Conasauga rivers) are of the same scale so they can be pasted together if desired.
- The mileage labels represent distance from the river's mouth.
- Boaters can use a GPS and the following GPS coordinates to estimate their position on the river.

Mile	Lat	Lon	Mile	Lat	Lon
0	N 34 15.221	W 85 10.603	26	N 34 11.251	W 84 56.503
2	N 34 15.420	W 85 09.502	28	N 34 11.336	W 84 55.470
4	N 34 14.205	W 85 08.593	30	N 34 09.827	W 84 54.994
6	N 34 13.752	W 85 06.712	32	N 34 08.241	W 84 55.501
8	N 34 14.202	W 85 04.759	34	N 34 08.561	W 84 53.949
10	N 34 12.845	W 85 04.338	36	N 34 07.708	W 84 52.580
12	N 34 13.855	W 85 03.280	38	N 34 08.862	W 84 51.124
14	N 34 14.655	W 85 01.713	40	N 34 07.824	W 84 50.763
16	N 34 13.584	W 85 01.183	42	N 34 07.255	W 84 48.903
18	N 34 12.863	W 84 59.826	44	N 34 08.262	W 84 47.260
20	N 34 13.929	W 84 58.882	46	N 34 09.318	W 84 46.184
22	N 34 12.467	W 84 58.711	48	N 34 09.768	W 84 44.441
24	N 34 11.880	W 84 57.565			





Units are in degrees and decimal minutes

For more fishing information visit the Georgia DNR website at www.gofishgeorgia.com or call (706) 624-1161. T.I.P (Turn in Poachers): To report game/fish law violations, fish kills, or hazardous spills: call (800) 241-4113






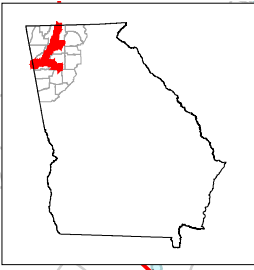
Etowah River (West)

-  Boat Ramp
-  River Miles
-  Railroad Bridge
-  Road Bridge

1 0 1 2 3 Miles



Coosa River Basin



River miles are distance from mouth except for Coosa River, which is distance from state line.